

Newsletter



Annette Fox Leukaemia Research Fund

Registered Charity No. 516208

Autumn 2011

20th Smokie Gala Dinner Dance



3rd February 2012

CEDAR COURT HOTEL, BRADFORD

Come and join us for an amazing night out with one of Bradford's best loved bands and help raise funds for the Annette Fox Leukaemia Research Fund

The evening starts at 7.30pm with;

- 3 Course Dinner
- Live Music from Smokie
- Raffle and Auction with Superb Prizes on offer
- Tombola and Games
- DJ and dancing into the early hours

**Tickets on sale now at £50 each
Special rates on tables of 10 at just £450
and tables of 12 just £550**

Special Room Rates of £50B&B single & £60B&B Double
with free parking and use of leisure facilities

For further details, or to request a booking form, please contact
Michelle Adam, Ward 7, Bradford Royal Infirmary on 01274 364168
Or e-mail michelle.adam@bthft.nhs.uk

CONTENTS

Smokie Gala Dinner Dance	1
Collection Tins	1
Just Giving	1
Donations In Lieu	1
Fundraisers	2
Happiness Kits	3
How We Help	3
New Post	3
Just Text Giving	3
Website	3
2011 Christmas Cards	4
Gift Aid	4

Collection Tins

Collection Tins are out and about in various shops, bars and retail outlets around Bradford.

They are a vital benefit to the charity as they not only bring in donations, but also advertise the Fund.

Over the last year we have received in excess of £500 from Collection Tins alone.

Maybe you could ask your local shop or hairdressers to put a tin on the counter, or you could simply collect loose change at home – every penny really does count.



Many of our supporters now choose JustGiving as a way of raising funds. They can set up their own fundraising page which they then e-mail to all their friends and colleagues. Donations are then made online, the money is automatically gift aided (an extra 25% on top of the donation) and transferred to our bank account. Simple!

For step by step instructions on how to set up a fundraising page, to view other fundraisers pages and see the challenges they have set themselves, to make a donation or for further information go to www.justgiving.com/aflr

Donations In Lieu

Thank you to everyone who has made donations to the AFLRF in lieu of special events.

We have benefited from people celebrating such things as; a Wedding, 70th Birthdays, Golden Wedding Anniversary etc.

Congratulations to you all and thank you for your generosity.

Fundraisers

The Annette Fox Leukaemia Research Fund is extremely grateful to everyone who organises their own fundraising events to raise money for the Charity. Below are just a handful of these remarkable people who put in the time and effort on our behalf.

Sakina Hafesji

Thank you to Sakina and her family who are raising money for the Annette Fox Leukaemia Research Fund in memory of their father, who received treatment on Ward 7. Sakina presented a cheque for £260 which she raised by holding fundraising stalls in London.



Teresa Beaufort-Jones

Teresa's treatment on Ward 7 resulted in her losing her hair. Supported by her family and friends, she decided to turn this into a positive and organised a sponsored head shave. Thank you very much to Teresa who managed to raise an amazing £758.40 for the Fund.

Stoney Brigg Riding Stables

Thank you to all the horses and riders at Stoney Brigg Riding Stables, Doncaster, who took part in a special Fun Day. They managed to raise a total of £211.08 and had a lot of fun in the process.

Bradford St James's Market Tenants Association

Thank you to the Bradford St James's Market Tenants Association for choosing the AFLRF as the charity to support at their Annual Fundraising Dinner. A fantastic total of £12,000 was raised for the Fund.

Bingley Rotary Clubs

Thank you to Bingley Rotary Clubs who held a Charity Dinner in Myrtle Park on 21st July. The proceeds were shared between the AFLRF and the Alzheimer's Society

Jan Greenwood

Thank you to Jan Greenwood who put together a musical fundraising evening and supper in Bradford with local up and coming band Cellar Rats. Jan raised £630 for the Fund on the evening.



FAMILY FUNDAY

A huge thank you to Shirley Taylor and friends who organised a Family Funday, evening disco, raffle and auction at Bankfoot Cricket Club on Sunday 28th August.

Over £7,700 was raised for the AFLRF.

The event was a huge success, very well supported (despite the weather) and everyone who attended thoroughly enjoyed themselves.

The "Mighty Furtles" played live music at the event, there was a Cheerleading display, tug of war, rounders match and stalls selling everything from ice-creams to handbags.

The friends are already planning their next fundraising event, an "Olympic" themed calendar, which will be on sale in time for Christmas. For more details contact Michelle on 01274 364168 .





HAPPINESS KITS

EACH KIT CONTAINS:

- An Eraser** – to make your mistakes disappear
- A Coin** – so you can never say you're broke
- A Marble** – in case someone says you've lost yours
- A Rubber Band** – to stretch yourself beyond your limits
- A Piece Of String** – to tie things together when they fall apart
- A Heart** – to remind you that love is all around you.

(The list above is also enclosed in each box)

£3 each

Available to buy from the Annette Fox Office on Ward 7
(Outside of box reads either; Get Well Soon, Wife, Mum, Daughter, Sister, Son, Niece, Aunt etc special orders for outside of box can be requested, i.e. On Your Wedding Day, Happy Birthday etc)

Contact Michelle on 01274 364168 for more information or to place an order.

THANK YOU TO ANN BOOTH FOR MAKING THESE WONDERFUL GIFTS



An easy and quick way of making donations is to send a simple text message.

Text AFOX22 to 70070 and the amount you would like to donate, either £1, £2, £3, £4, £5 or £10.

We receive 100% of your donation!

Website www.annettefox.co.uk

Don't forget to check out our website for all the latest news and events.

How We Help!

Your donations are used by the Annette Fox Leukaemia Research Fund to provide many services, such as, supporting research and promoting training of specialist nurses.

The fund regularly contributes to the upkeep of Ward 7 by purchasing replacements for old or broken equipment, providing toiletries for patients who have to stay overnight unexpectedly and funding major purchases such as electric beds and blood fridges etc.

The AFLRF also continue to fund a;

Welfare Benefits Advisor

Based at the Cancer Support Centre, she visits patients at home and on Ward 7 and provides them with important financial guidance when they are facing very difficult situations.

Paediatric Nurse Specialist

Working with children with severe blood disorders in and around the Bradford area.

Aromatherapist

Visiting patients on Ward 7 and providing welcome complimentary therapy treatments.

New Post

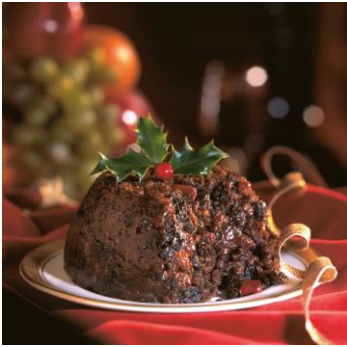
Annette Fox Clinical Nurse Specialist

We are delighted to be funding a new post for the next 3 years, an Annette Fox Clinical Nurse Specialist.

The successful candidate is Sally Sharp, who many of you will know as Sister on the Day Unit. We would like to congratulate Sally, who will be taking up her new post in the New Year.



2011 Christmas Cards



"Christmas Pudding"



"Forest Of Presents"



"Santa and his Reindeer"



"Checking it Twice"



"Art Tree"



"Berry Christmas"

This year's selection of Christmas Cards are priced at just £2.99 per pack of 10.

Cards can be purchased from our office on Ward 7 (Monday, Wednesday, Thursday and Friday) from the Yorkshire Clinic, or from our outlet in Bingley – Beton Machinery Sales Ltd, Construction House, Whitley Street, Bingley, BD16 4JH (weekdays 9.30am–5.00pm). Orders can also be placed by telephone, please call Michelle on 01274 364168 or e-mail michelle.adam@bthft.nhs.uk



"Snowman and Friends"

Making your donations go further

Through Gift Aid and Transitional Relief, you can help us make your donations go 28% further - and it won't cost you a penny!

How does it work?

As long as you are a UK taxpayer, Gift Aid enables you to boost the value of your donations by 28p for every £1 you give (25p in Gift Aid and a further 3p in Transitional Relief). So, for example, if you decide to give £10, we will be able to reclaim an extra £2.80 from HM Revenue & Customs. It might not sound like a lot, but every penny really does count!

What do you need to do?

To donate through Gift Aid, all you need to do is complete a simple declaration form (available from our office) confirming that you are a taxpayer and that you are happy for us to claim tax relief on your donation. Just one declaration can apply to all donations that you have made to us over the past 6 years and to any forthcoming gifts you make, until you notify us otherwise. It is that simple.

Please contact Michelle on 01274 364168 to request a Gift Aid form.

giftaid it

Annette Fox Leukaemia Research Fund
Ward 7, Bradford Royal Infirmary, Duckworth Lane, Bradford, BD9 6RJ
Tel/Fax: 01274 364168 e-mail: annette.fox@bthft.nhs.uk www.annettefox.co.uk